

Gastro+™ Gastrolyzer®

Portable breath hydrogen monitoring to help diagnose gastrointestinal disorders.



Infection control plays an important role in the medical device industry, but now more than ever, we must take extra precaution to ensure the safety of healthcare professionals and patients alike when performing Hydrogen Breath Testing (HBT) to aid in the diagnosis of gastrointestinal disorders.

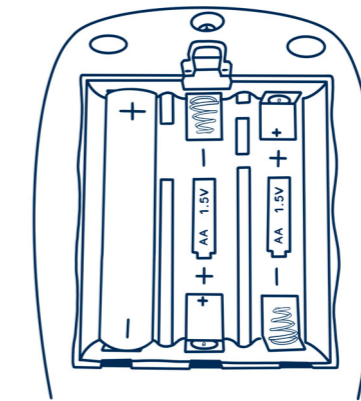
This guide has been put together to help you safely resume HBT monitoring.

Contents

Important Information.....	Page 2
How to perform a calibration.....	Page 3
How to perform a breath test.....	Page 5
How to perform a breath test with a face mask.....	Page 6

Important Information:

NOTE: The Gastro⁺™ should be wiped down before and after each test. For a full list of recommended cleaning wipes and solutions, please visit: <https://www.bedfont.com/cleaning-bedfont-monitors>

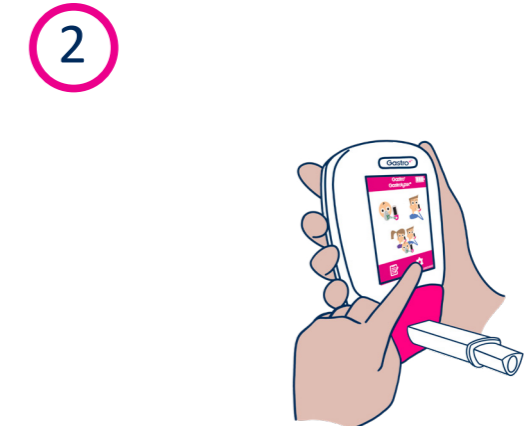


If it's been a while since you've used your Gastro⁺™ Gastrolyzer®, please check the batteries have charge. Replace them if necessary

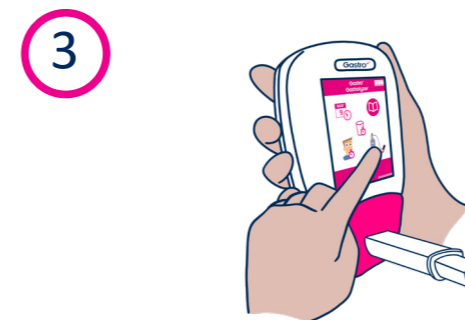
How to perform a calibration:



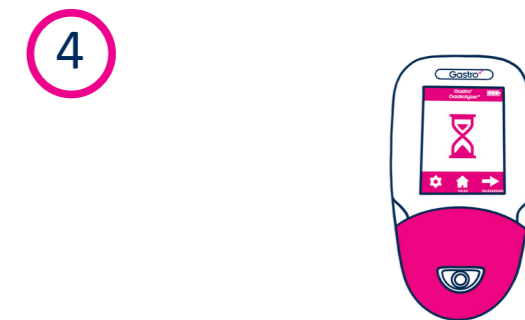
To perform a calibration test, firstly turn on the Gastro⁺™ device



Press the settings icon to open the settings menu

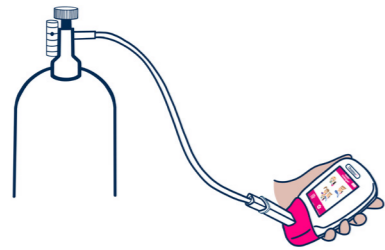


Press the calibration icon to start the calibration



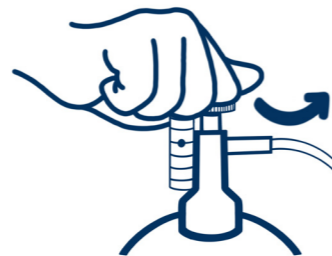
Allow the Gastro⁺™ device to zero

5



As prompted, attach the regulator to the Gastro+™ device and follow the onscreen instructions to run the calibration

6



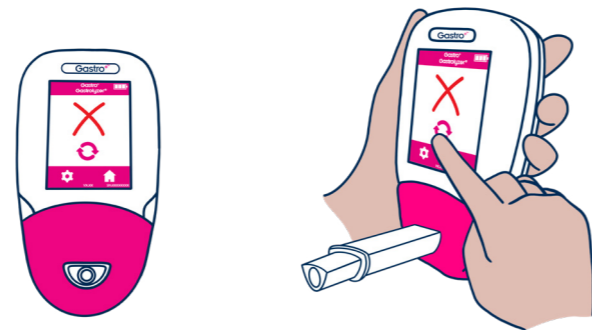
Open the gas regulator to perform the test

7



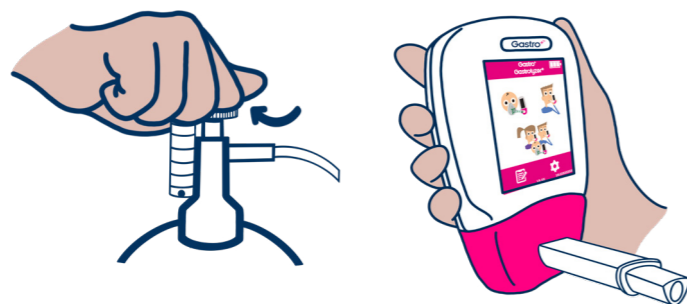
If the Gastro+™ Gastrolyzer® successfully completed its calibration, a green tick will show

8



If the the Gastro+™ Gastrolyzer® failed its calibration a red cross will show, press the retry icon to try again. If unsuccessful consult the troubleshooting section of the manual or contact your local distributor for help

9



Close the regulator when the calibration is finished

How to perform a breath test:

Bedfont® Scientific Ltd. has put together some advice on how to safely perform breath tests during the pandemic, however, first and foremost, it is recommended that you follow your local guidelines on breath testing procedures and necessary PPE

1



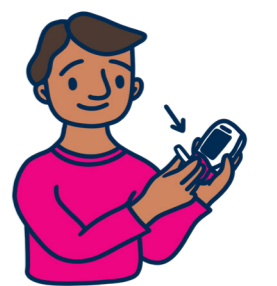
The Gastro+™ should be wiped down before and after each test. For a full list of recommended cleaning wipes and solutions, please visit: <https://www.bedfont.com/cleaning-bedfont-monitors>

2



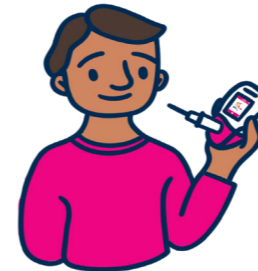
The external surfaces of the D-piece™ filter should also be wiped down before and after each test
D-piece™ should be replaced every 30 days

3

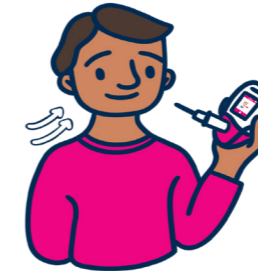


A new SteriBreath™ mouthpiece should be used for each patient. It is best practice for the patient to insert their own mouthpiece

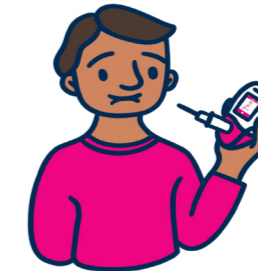
4



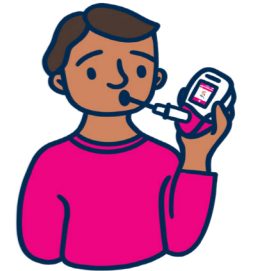
Follow the instructions on the Gastro+™ to complete a breath test



The patient will be prompted to inhale and hold their breath



There will be a 15 second countdown



The patient will be prompted to exhale slowly into the device, and should aim to completely empty their lungs

5



The results will rise and stabilise onscreen

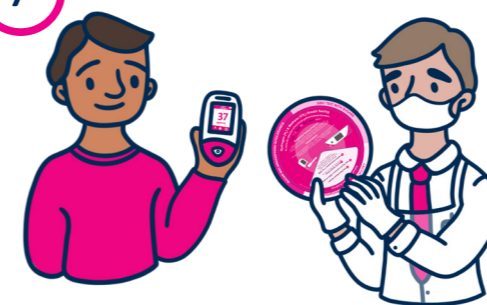


6



Allow the patient to throw away their used mouthpiece

7



Results can be interpreted using the Gastrolyzer® Interpretation Wheel

8



The external surfaces of the D-piece™ filter should also be wiped down before and after each test
D-piece™ should be replaced every 30 days

9



The Gastro+™ should be wiped down before and after each test. For a full list of recommended cleaning wipes and solutions, please visit: <https://www.bedfont.com/cleaning-bedfont-monitors>

How to perform a breath test with a face mask:

Bedfont® Scientific Ltd. has put together some advice on how to safely perform breath tests during the pandemic, however, first and foremost, it is recommended that you follow your local guidelines on breath testing procedures and necessary PPE

1



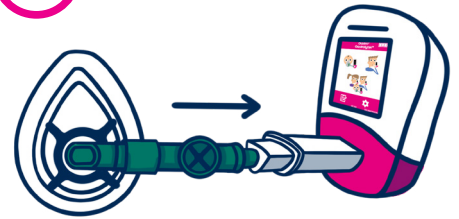
The Gastro+™ should be wiped down before and after each test. For a full list of recommended cleaning wipes and solutions, please visit: <https://www.bedfont.com/cleaning-bedfont-monitors>

2



The external surfaces of the D-piece™ filter should also be wiped down before and after each test
D-piece™ should be replaced every 30 days

3



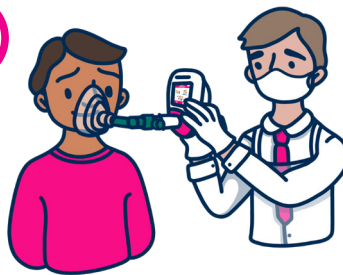
Assemble the sampling system by inserting the D-piece™ filter into the Gastro+™, then the sampling system and finally the face mask. A new face mask sampling system should be used for each patient

4



Follow the instructions on the Gastro+™ to complete a breath test

5



Prompt the patient to inhale and exhale into the face mask

6



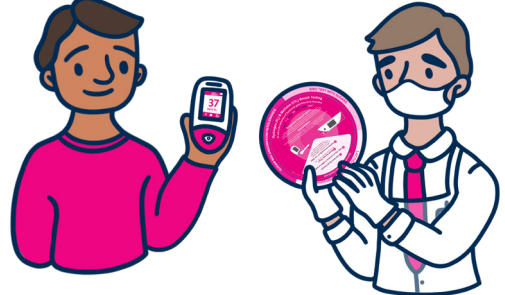
Sampling will last 60 seconds as the ppm levels rise and hold. The result will be shown onscreen

7



Allow the patient to throw away their used mouthpiece

8



Results can be interpreted using the face mask test interpretation chart

9



The external surfaces of the D-piece™ filter should also be wiped down before and after each test
D-piece™ should be replaced every 30 days

10



The Gastro+™ should be wiped down before and after each test. For a full list of recommended cleaning wipes and solutions, please visit: <https://www.bedfont.com/cleaning-bedfont-monitors>



Bedfont® Scientific Ltd.
Station Road, Harrietsham, Maidstone,
Kent, ME17 1JA England
Tel: +44 (0)1622 851122 Fax: +44 (0)1622 854860
Email: ask@bedfont.com Web: www.bedfont.com



Stephen Rowe
Cristimar E4-1
Ave Juan Carlos I
Los Cristianos, Arona, 38650
Santa Cruz de Tenerife, Spain

