

pico™ Smokerlyzer®

CO monitoring made easy.



Infection control plays an important role in the medical device industry, but now more than ever, we must take extra precaution to ensure the safety of healthcare professionals and patients alike when performing CO breath tests to help people stop smoking.
This guide has been put together to help you safely resume CO monitoring.

Contents

Important Information.....	Page 2
How to perform a bump test with a non-smoker.....	Page 3
How to perform a bump test with verified gas.....	Page 4
How to perform a calibration.....	Page 5
How to perform a breath test.....	Page 6

Important Information:

NOTE: The piCO™ should be wiped down before and after each test. For a full list of recommended cleaning wipes and solutions, please visit: <https://www.bedfont.com/cleaning-bedfont-monitors>

How to perform a bump test with a non-smoker:

Prior to undertaking your first CO test, please check the piCO™ Smokerlyzer® is reading correctly by performing a Bump Test. This can be done by performing a breath test yourself or with a known non-smoker, or by using verified gas.

1



Press the breath test icon to begin

2



Follow the instructions on the piCO™ to complete a breath test

The practitioner will be prompted to inhale and hold their breath

There will be a 15 second countdown

The practitioner will be prompted to exhale slowly into the device, and should aim to completely empty their lungs

3



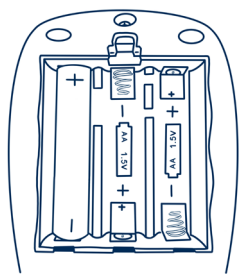
If the device is reading correctly, a non-smoker reading will be shown onscreen; this result should be green and under 6ppm.

If the reading comes back a little high, it could be due to environmental CO; please verify the Smokerlyzer® with a second non-smoker.

If the reading is too high, you might need to calibrate your machine

How to perform a bump test with verified gas:

1



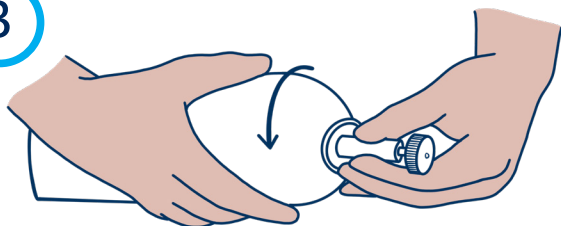
If it's been a while since you've used your piCO™, please check the batteries have charge. Replace them if necessary

2



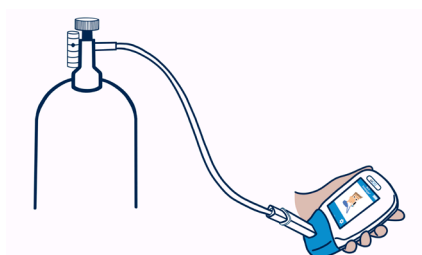
As routine maintenance, a bump test should always be performed after long periods of no use to check the device is reading correctly. You can perform a bump test using either a non-smoker or certified gas to ensure the device is reading correctly.

3



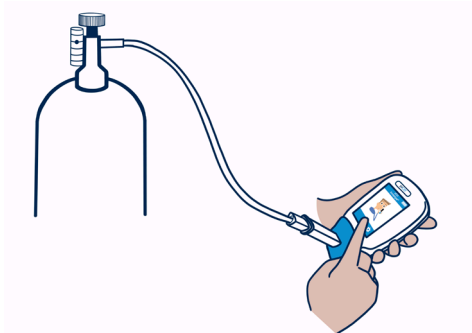
To perform a bump test using gas, firstly attach the gas canister to the gas regulator by screwing the canister into the regulator

4



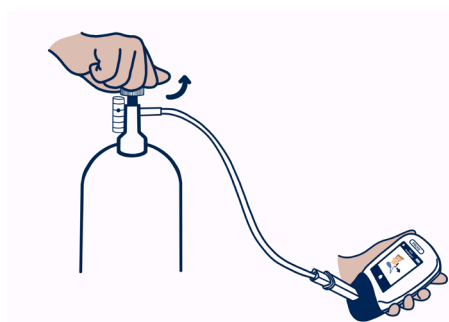
Attach the regulator to the piCO™ device

5



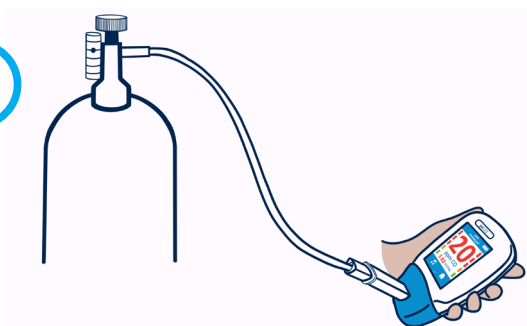
Start the breath test on the piCO™ device

6



Once the countdown has finished and the screen prompts to exhale, open the gas regulator to perform the bump test

7



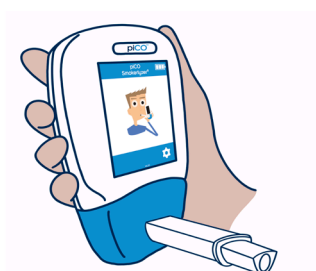
Once the reading has stabilised on screen close the regulator to turn off the gas

8



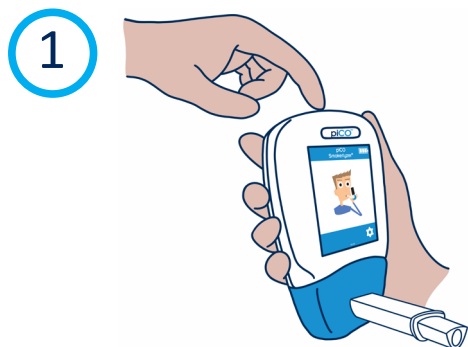
Make sure the piCO™ device is reading between 15 and 22 ppm

9

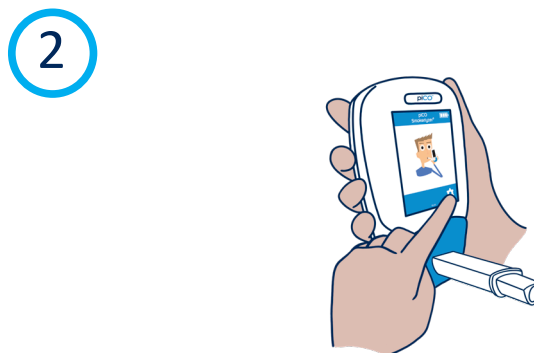


If the piCO™ is not reading between this range, please calibrate the device

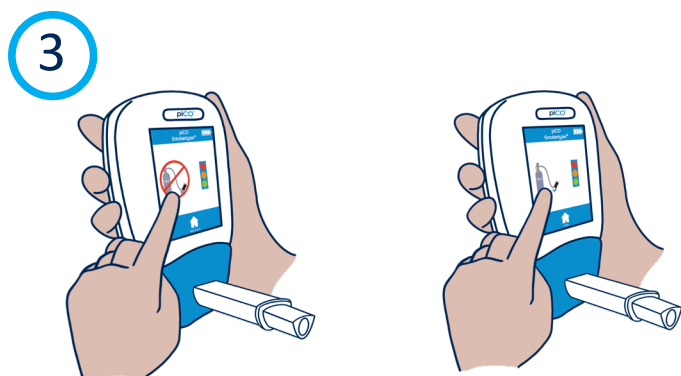
How to perform a calibration:



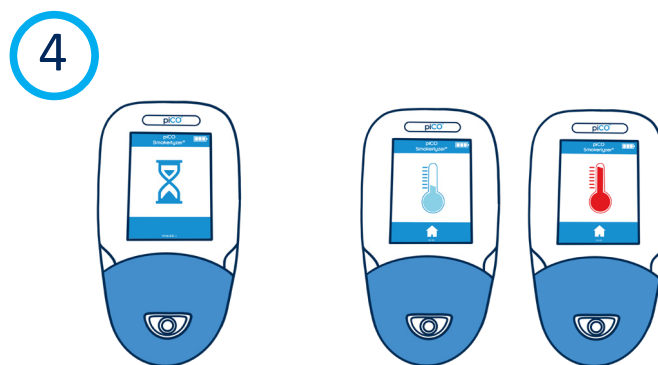
To perform a calibration test, firstly turn on the piCO™ device



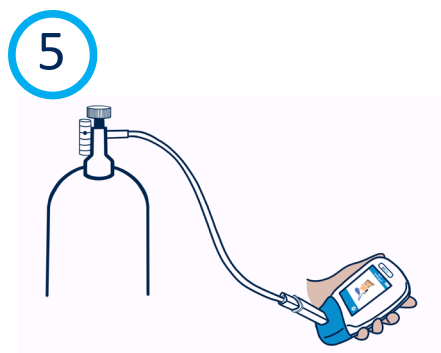
Press the settings icon to open the settings menu



Press the calibration icon 5 times to unlock the option then press the icon once more to start the calibration



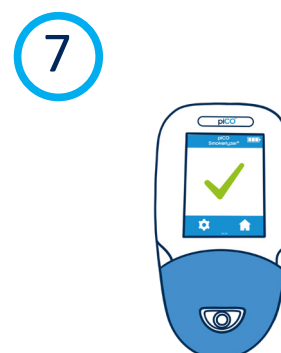
Allow the piCO™ device to zero. If the device is too cold or hot please wait for it to come to ambient temperature before continuing



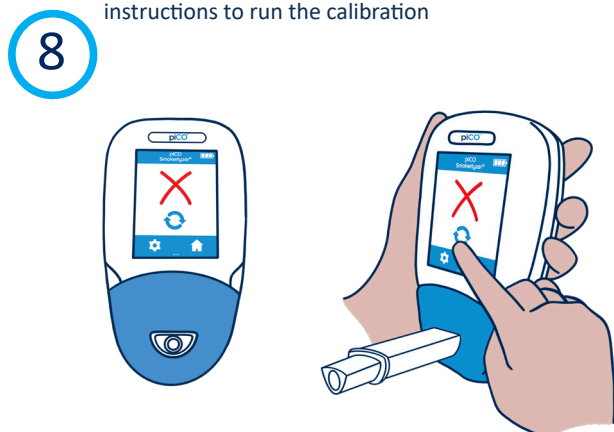
As prompted, attach the regulator to the piCO™ device and follow the onscreen instructions to run the calibration



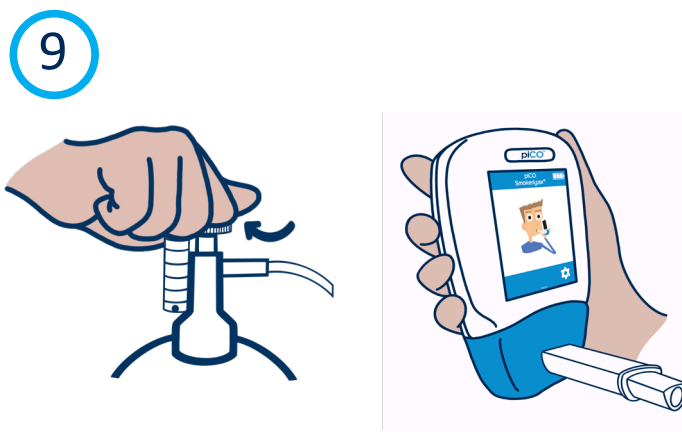
Open the gas regulator to perform the test



If the piCO™ successfully completed its calibration a green tick will show



If the piCO™ failed its calibration a red cross will show, press the retry icon to try again. If unsuccessful consult the troubleshooting section of the manual or contact your local distributor for help



Close the regulator when the calibration is finished

How to perform a breath test:

Bedfont® Scientific Ltd. has put together some advice on how to safely perform breath tests during the pandemic, however, first and foremost, it is recommended that you follow your local guidelines on breath testing procedures and necessary PPE

1



The piCO™ should be wiped down before and after each test.
For a full list of recommended cleaning wipes and solutions,
please visit:
<https://www.bedfont.com/cleaning-bedfont-monitors>

2



The external surfaces of the D-piece™ filter should also be wiped down before and after each test
D-piece™ should be replaced every 30 days

3



A new SteriBreath™ mouthpiece should be used for each patient. It is best practice for the patient to insert their own mouthpiece

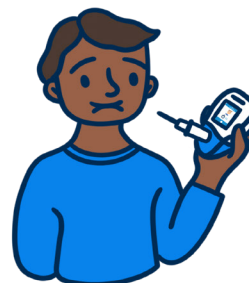
4



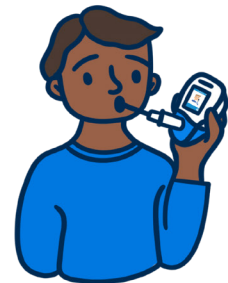
Follow the instructions on the piCO™ to complete a breath test



The patient will be prompted to inhale and hold their breath



There will be a 15 second countdown



The patient will be prompted to exhale slowly into the device, and should aim to completely empty their lungs

5



The results will rise and stabilise onscreen

6



Allow the patient to throw away their used mouthpiece

7



Results can be interpreted using the Smokerlyzer® CO Chart

8



The external surfaces of the D-piece™ filter should also be wiped down before and after each test
D-piece™ should be replaced every 30 days

9



The piCO™ should be wiped down before and after each test.
For a full list of recommended cleaning wipes and solutions, please visit:

<https://www.bedfont.com/cleaning-bedfont-monitors>



Bedfont® Scientific Ltd.
Station Road, Harrietsham, Maidstone,
Kent, ME17 1JA England
Tel: +44 (0)1622 851122 Fax: +44 (0)1622 854860
Email: ask@bedfont.com Web: www.bedfont.com



Emergo Europe B.V.
Westervoortsedijk 60
6827 AT Arnhem
The Netherlands.

