

NObreath[®]

FeNO monitoring made easy.



Contents

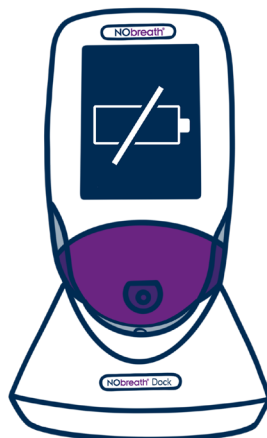
Setting up the NObreath[®] device: 2

How to perform a bump test with verified gas: 3

How to perform a calibration: 4

Setting up the NObreath® device:

1



Please ensure you charge the NObreath® for 24 hours prior to use if it has not been used in a while.

NOTE: The device will only charge whilst switched off.

2



Depending on how much time has passed, you may be asked to re-enter the time and date. Please input these details and save them to continue

3



The NObreath® set-up is now complete and you are ready to begin resuming FeNO breath testing

How to perform a bump test with verified gas:

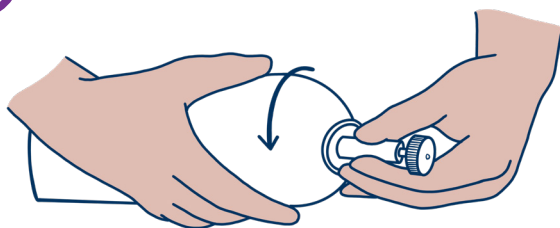
1



As good practice, if the NObreath® has not been used for a prolonged period a bump test should be performed to check the device is reading correctly.

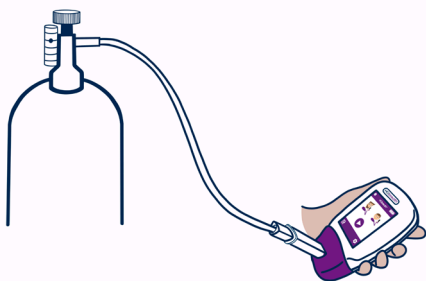
You can perform a bump test using certified gas to ensure the device is reading correctly

2



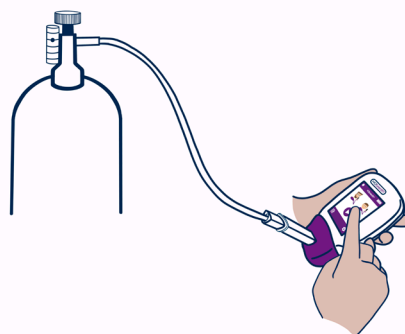
To perform a bump test using gas, firstly attach the gas canister to the gas regulator by screwing the canister into the regulator

3



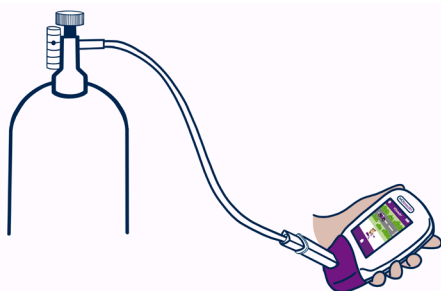
Connect the calibration tube with the mouthpiece to the NObreath® device

4



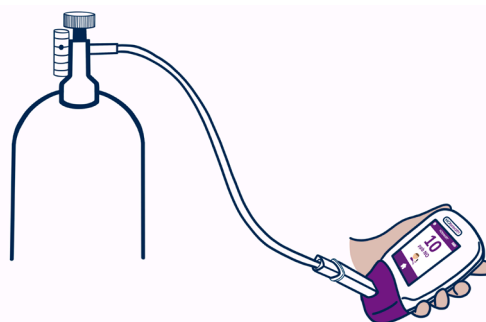
Start the breath test on the NObreath® device. A bump test can be completed in patient test mode, the gas flow should be 3lit/min during this test. Alternatively a bump test can also be completed in diagnosis mode which uses 1lit/min

5



Once the countdown has finished and the screen prompts to exhale, open the gas regulator to perform the bump test.

6



Once the reading has stabilised on screen, close the regulator to turn off the gas

7



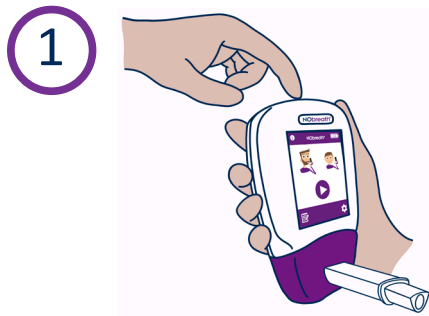
Make sure the NObreath® device is reading between 180 and 220 ppm when using 200ppb gas or the value should be within $\pm 10\%$ of the gas concentration used

8



If the NObreath® is not reading between this range, please calibrate the device

How to perform a calibration:



To perform a calibration test, firstly turn on the NObreath® device



Press the settings icon to open the settings menu



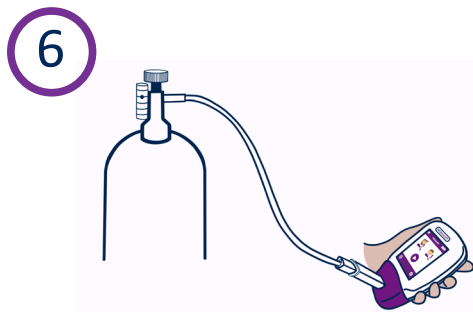
Press the calibration icon to start the calibration



Allow the NObreath® device to zero



Follow the on screen instructions. Adjusting the gas concentration is important before proceeding further



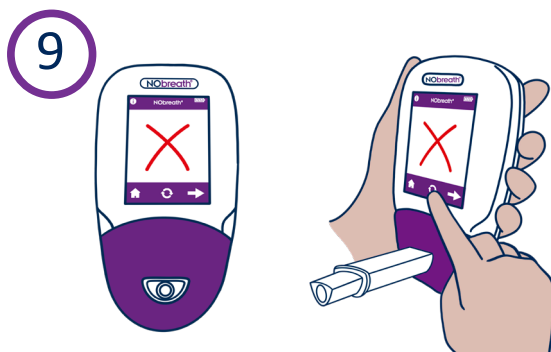
As prompted, connect the calibration tube with the mouthpiece to the NObreath® device and follow the onscreen instructions to run the calibration



Open the gas regulator to perform the test




If the NObreath® successfully completed its calibration, a green tick will show



If the the NObreath® failed its calibration a red cross will show, press the retry icon to try again. If unsuccessful consult the troubleshooting section of the manual or contact your local distributor for help



Close the regulator when the calibration is finished

 **Bedfont® Scientific Ltd**
Station Road, Harrietsham, Maidstone, Kent,
ME17 1JA, England
Tel: +44 (0)1622 851122, Fax: +44 (0)1622 854860
Email: ask@bedfont.com, Web: www.bedfont.com

EC REP
Emergo Europe B.V.
Westervoortsedijk 60
6827 AT Arnhem
The Netherlands.

© Bedfont® Scientific Limited 2024

Issue 5 - September 2024, Part No: MKT535
Bedfont® Scientific Limited reserve the right to change or update this literature without prior notice. Registered in:
England and Wales. Registered No: 1289798

 **2797** 

 **bsi**
ISO 13485
Quality
Management for
Medical Devices
CERTIFIED
MD 502905