

NObreath[®]

FeNO monitoring made easy.



Infection control plays an important role in the medical device industry, but now more than ever, we must take extra precaution to ensure the safety of healthcare professionals and patients alike when performing FeNO monitoring to aid in managing asthma.

This guide has been put together to help you safely resume FeNO monitoring.

Contents

Important Information	2
Setting Up The NObreath® Device	3
How To Perform A Breath Test	4

Important Information

NOTE: The NObreath® should be wiped down before and after each test. For a full list of recommended cleaning wipes and solutions, please visit: <https://www.bedfont.com/cleaning-bedfont-devices>

WARNING: Do not inhale through the mouthpiece.

NOTE: Ensure the patient inhales through the mouth, not the nose, before exhaling through the mouthpiece.

Setting Up The NObreath® Device

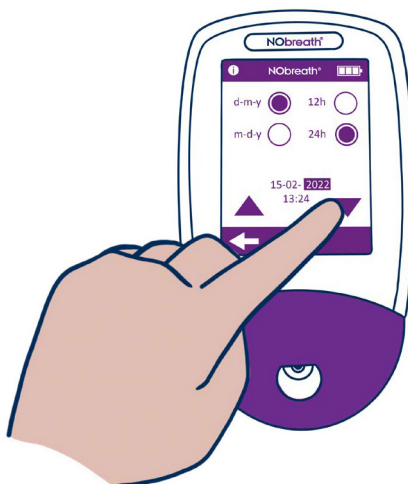
1



Please ensure you charge the NObreath® for 24 hours prior to use if it has not been used in a while.

NOTE: The device will only charge whilst switched off.

2



Depending on how much time has passed, you may be asked to re-enter the time and date.

Please input these details and save them to continue.

3



The NObreath® set-up is now complete and you are ready to begin resuming FeNO breath testing.

How To Perform A Breath Test

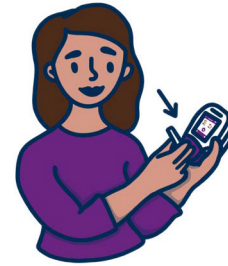
Bedfont® Scientific Ltd. have put together some advice on how to safely perform breath tests during the pandemic, however, first and foremost, it is recommended that you follow your local guidelines on breath testing procedures and necessary PPE.

1



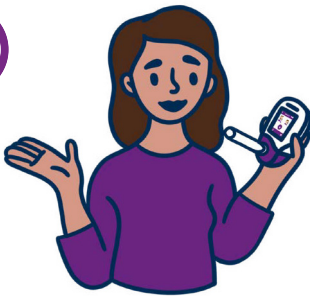
The NObreath® should be wiped down before and after each test.
For a full list of recommended cleaning wipes and solutions, please visit: <https://www.bedfont.com/cleaning-bedfont-devices>

2

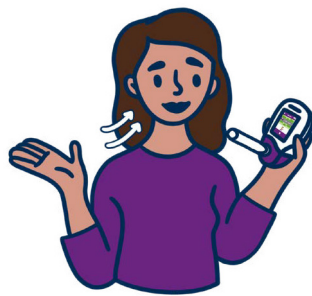


A new NObreath® mouthpiece should be used for each patient. It is best practice for the patient to insert their own mouthpiece.
WARNING: Do not inhale through the mouthpiece.
NOTE: Ensure the patient inhales through the mouth, not the nose, before exhaling through the mouthpiece.

3



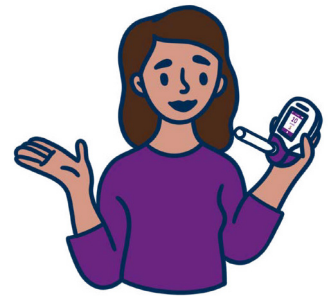
Follow the instructions on the NObreath® to complete a breath test.



The patient will be prompted to inhale.

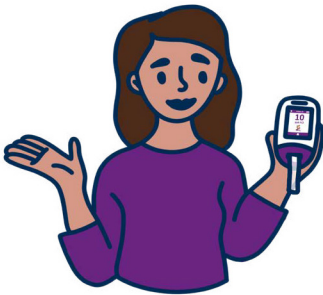


The patient will be prompted to exhale slowly into the device until the test has completed.



A green tick will show when the test is done and is successful. Press the retry icon if unsuccessful.

4



The results will rise and stabilise onscreen.

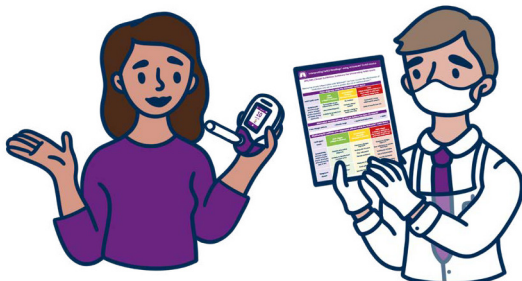


5



Allow the patient to throw away their used mouthpiece.

6



Results can be interpreted using the NObreath® FeNO interpretation chart.

7



The NObreath® should be wiped down before and after each test.
For a full list of recommended cleaning wipes and solutions, please visit: <https://www.bedfont.com/cleaning-bedfont-devices>



Bedfont® Scientific Ltd.
Station Road, Harrietsham, Maidstone,
Kent, ME17 1JA England
Tel: +44 (0)1622 851122 Fax: +44 (0)1622 854860
Email: ask@bedfont.com Web: www.bedfont.com



Emergo Europe B.V.
Westervoortsedijk 60
6827 AT Arnhem
The Netherlands.